



# Landlord Relationship Officer Candidate Pack



Make  
a  
difference  
Work for your  
local council



**DARTFORD**  
BOROUGH COUNCIL

## About the role



## Landlord Relationship Officer

**(12 Months Fixed Term)**

**Directorate** – Housing and Public Protection

**Department** – Housing Solutions

**Grade** – F

**Salary** – £36,760 PA

**Hours** - 37 hours per week – Monday – Friday

Hybrid Working Available

### About the role

The role is responsible for building relationships with landlords and lettings agents in order to secure alternative housing options for people owed a statutory duty under homelessness legislation. The officer will also be expected to confidently make suitable offers of accommodation and discharge the Council's housing duties within the meaning of The Housing Act 1996.

**This post is considered by DBC to be a customer-facing position. The Council therefore has a statutory duty under Part 7 of the Immigration Act (2016) to ensure that post holders have a command of spoken English sufficient for the effective performance of the job requirements.**

### Skills, Knowledge and Experience:

#### Duties and responsibilities will include:

- To provide efficient, effective and responsive tenancy management services for accommodation secured by the Council and used as accommodation for homeless families
- To provide a single point of contact for private sector landlords including advice on tenancy agreements, tenant/landlord mediation, Notice to Quits, possession proceedings.
- To ensure that all records and monitoring arrangements are kept accurately and up to date.
- To liaise with and signpost applicants for help and support as necessary.
- To facilitate with the Landlords Forum
- To work with our private sector housing colleagues to ensure properties are safe, free from hazards and licenced where necessary.
- Assist in the running of an effective and efficient service within the framework of the appropriate legislation and provide all necessary guidance, advice and assistance to the public.
- To promote good practice to landlord and lettings agents
- To write clear and legally robust offer letters and discharge of duty letters within The Housing Act 1996 and the Homelessness Reduction Act 2017
- Seek out new landlords and accommodation sources for households to meet duties under the Homelessness Reduction Act 2017
- Complete affordability assessments and offer financial advice where appropriate
- To carry out any other duties which are appropriate to the post.
- To promote the private sector schemes to landlords and to actively encourage them to work with Dartford Borough Council



workplace  
wellbeing  
CHARTER

**DARTFORD**  
BOROUGH COUNCIL

## Disability Confident Employer

DBC is Disability Confident Employer and welcomes applications from candidates with a disability.

We operate a Guaranteed Interview to any candidate with a disability who meets the minimum criteria for the role. If you have a disability and are applying for a particular role, please ensure that you indicate this on your application form, and advise us of any reasonable adjustments which you may require.

A disability under the Equality Act 2010 is defined as a physical or mental impairment which has a substantial and long term adverse effect on your ability to carry out normal day to day activities.

## Care Leavers

We will offer an interview to care leavers who meet the minimum criteria for the post. If you are a care leaver, you must inform us of your care leaver status at the time of your application.

## Armed Forces

As part of the Council's commitment to the Armed Forces Covenant and to ensure that ex-armed forces personnel are not disadvantaged as a result of their service, veterans of the armed forces and/or their spouses/civil partners, applying for a job at the Council will be guaranteed the offer of an interview, provided that:

- They or their spouse/civil partner are currently serving in the armed forces and are within 12 weeks of their discharge date
- They or their spouse/civil partner were in long-term employment with the armed forces within the last five years
- They meet the essential criteria for the advertised role
- They confirm that they wish any application for a post at the Council to be considered under the guaranteed interview scheme.

## How to apply

Please apply via:

<https://www.dartford.gov.uk/by-category/jobs-and-careers/job-vacancies-at-the-council>

Do not send your CV – only fully completed application forms via the link above will be accepted

**We reserve the right to close this vacancy before the advertised closing date. Please apply early to avoid disappointment.**

## Shortlisted?

Shortlisting and selection will be based on the job profile and experience required. You will need to address these requirements in your application drawing on any experience you have gained at work or in a voluntary capacity. You should give examples of how you meet the criteria outlined in the job profile and the Council's Core Behaviours. If you are unable to explain how you meet the requirements of the role, we may not be able to shortlist you.

## Closing date:

23:59 29th June 2026

## Interview date:

Week Commencing 6th July 2026



**DARTFORD**  
BOROUGH COUNCIL

## About the Council



## Why Dartford

'Dartford is a place of quality, choice and safety. A place where great communities, concern for the environment and a successful economy support people who want to live, work and enjoy leisure time.'

Dartford Borough Council is one of the most exciting places to work in the region. Not only are we working on some special projects to improve life in the borough but we also have one of the most accessible offices in the country.

## Our Commitment to Equality and Diversity

Dartford Borough Council is committed to equal opportunities policies and action to ensure that the best candidates for any post are appointed irrespective of age, disability, gender reassignment, marriage and civil partnership, pregnancy and maternity, race, religion and belief, sex and sexual orientation. We operate a name-blind recruitment process and remove candidates' personal information to ensure that people will be shortlisted for interview on merit.

Our aim is to remove barriers to employment, promotion and development so that all employees have equal access to these on the basis of ability and the requirements of the job.

We are committed to challenging inequality, discrimination and disadvantage and to achieving the highest standard of employment practice. Equality of opportunity for all sections of the community and workforce is an integral part of this commitment, and we welcome applications from all sectors of the community.

The Council has signed up to the Disability Confident Scheme. Through Disability Confident, we are working to ensure that disabled people and those with long term health conditions have the opportunities to fulfil their potential and realise their aspirations. We are committed to interviewing all disabled candidates who meet the minimum criteria for the role. In addition the Council will where possible make reasonable adjustments to ensure the interview process is accessible to disabled candidates.



workplace  
wellbeing  
CHARTER

**DARTFORD**  
BOROUGH COUNCIL

## Getting to us

Civic Centre  
Home Gardens  
Dartford  
Kent DA1 1DR

### By car...

The Civic Centre can be accessed via A206 to the north, A282/M25/M20 to the east and the A2 to the south. The A226 Dartford Road links Bexley to Dartford Town Centre. The Council offers free car parking for staff.

### By train...

Dartford Civic Centre is situated opposite Dartford station. Dartford is part of the TfL Oyster card area and there are regular and frequent services from Central London (Charing Cross, Victoria and London Bridge). In the opposite direction there are regular services to Gravesend and the Medway Towns with connections to Canterbury and the Kent Coast.

### By bus...

Good bus services serve Dartford town centre, including TfL buses, and the Fastrack rapid transit system. Bus stops in Home Gardens, two minutes walk to the Civic Centre, are served by:

- TfL bus routes 96, 428 and 492
- Fastrack bus routes A, B & C
- Arriva Sapphire bus services routes 480 & 490 between Dartford Town Centre and Gravesend.

### By bike...

Dartford Town Centre lies on strategic cycle routes. View the routes on the Explore Dartford Maps:

[https://explorekent.org/wp-content/uploads/2020/06/EK-DARTFORD\\_PRINT.pdf](https://explorekent.org/wp-content/uploads/2020/06/EK-DARTFORD_PRINT.pdf)

[Link to map and more info](#)

## Dartford Borough Council Civic Centre



## Core Behaviours

Values are a key component of a healthy workplace culture because they clarify how the Council and its staff should behave and help to ensure that everybody is working towards the same goals. They provide the framework within which employees can test decisions, accomplish tasks, and interact with others.

The Council's core behaviours reflect the special qualities that attract, engage and retain the talent that we want; and will be used to shape our culture by influencing the work we do, and how we do it. These behaviours focus the way we expect employees to approach daily business practices, conduct communications and interact with one another.

The Council has five core behaviours that guide the way we think and act as an organisation, and each member of staff is responsible for incorporating them into their day to day roles.



workplace  
wellbeing  
CHARTER

**DARTFORD**  
BOROUGH COUNCIL

## Core Behaviours

### Communication

#### Demonstrated by:

- Actively listening to customers and colleagues and asking questions to provide clarity
- Seeking to understand customer and colleague needs and proactively looking for ways to exceed expectations
- Being clear, concise and courteous
- Providing regular and timely feedback
- Leaving a positive impression of the Council

### Respect

#### Demonstrated by:

- Creating trusted relationships with customers, colleagues and communities to achieve mutual goals
- Treating customers and colleagues with respect and dignity and valuing others as individuals
- Learning from others and valuing differences
- Being thoughtful, tactful and considerate
- Acting with integrity, loyalty and trust

### Accountability

#### Demonstrated by:

- Taking the initiative and ownership of our decision, actions, performance and behaviour
- Learning from our mistakes and seeking out opportunities to improve
- Delivering on promises to customers and colleagues
- Being proud of what we do

### Adaptability/Flexibility

#### Demonstrated by:

- Displaying a 'can do' attitude and being innovative
- Embracing change
- Getting out of our comfort zones and creating our own opportunities
- Looking for the positive in every situation
- Challenging negativity and bad behaviour

### Collaboration

#### Demonstrated by:

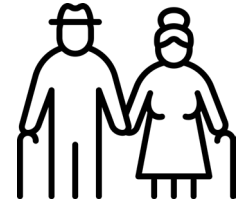
- Sharing ideas and challenges with our colleagues and actively seek out their opinion
- Working together beyond departmental boundaries to achieve superior results
- Ensuring everyone has an equal opportunity to share and contribute ideas
- Being part of the solution



# Total Reward Package

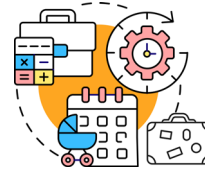
## Pension

We are part of the Local Government Pension Scheme (LGPS). There is a 50/50 section which enables a member to pay half rate contributions for half the benefits. The LGPS is a career averaged revalued scheme (CARE), which means your benefits are based on your salary for each year you are in the scheme. Your contribution rate, based on your salary, is 6.5%



## Holiday Entitlement

You will be given a generous holiday entitlement of 185 hours (equivalent of 25 days) plus a further 37 hours (equivalent of 5 days) after five years of continuous DBC service, and a bank holiday entitlement per annum. These amounts are pro-rated for part-time hours.



## Car Parking

Free car parking for work



## Private Medical Insurance

Subsidised private medical insurance for employees on Grade H and above on application



## Shared Cost AVC's

LGPS members have access to our Shared Cost Additional Voluntary Contribution (Shared Cost AVC) scheme, which offers you a cost-efficient way to invest in your financial future.



## Professional Membership Fees

The cost of one membership a year to a professional organisation that you require for your job



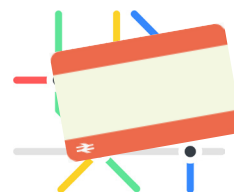
## Car Loan

A loan to assist you with buying a car, subject to certain criteria being met



## Season Ticket Loan

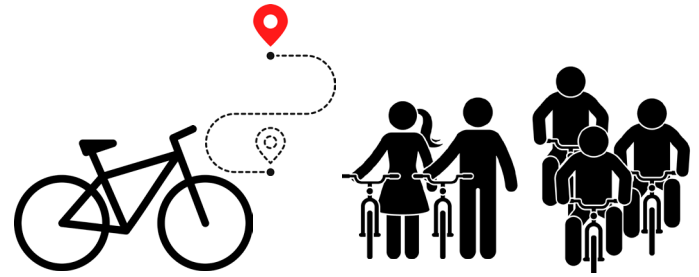
An interest free loan to assist with the purchase of a season ticket to travel to and from work



# Total Reward Package

## Cycle to Work

A salary sacrifice arrangement which allows employees to purchase a bicycle for travel to work. The scheme allows the cost to be spread over a monthly deductions and also reduces the employee's tax and national insurance costs.



## Hybrid Working

A Hybrid Working Policy which allows you to work part of your week remotely (depending on role and in agreement with your line manager)



## Flexi-Time Working

A flexi-time working scheme (in agreement with your line manager)



## Wellbeing

We have achieved the national Workplace Wellbeing Charter accreditation demonstrating our commitment to proactively championing a health workplace culture.



## Employee Assistance Programme

Access to a free and confidential Employee Assistance Programme which offers support for a wide range of issues including telephone and face to face counselling



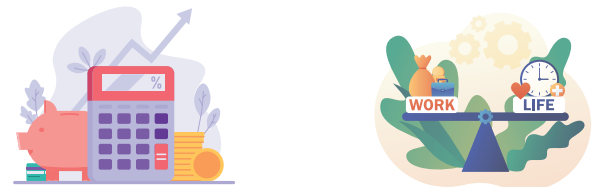
## Occupational Healthcare

An occupational health service to support employees in the management of health issues.



## Occupational Sickness Pay

Generous sick pay based on length of service



# Total Reward Package

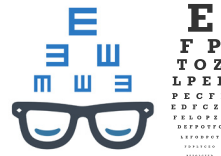
## Flu Vaccinations

Free flu vaccinations on an annual basis



## Eye Care

Assistance with the cost of an eye test and glasses or contact lenses for working with computer screens



## Fairfield Leisure Centre Discount

20% discount on Premium Membership



## Employee Benefits Portal

A host of benefits, deals and offers via our online benefits portal including, but not limited to, shopping, travel and activities



## Family Friendly Policies

An enhanced package of Maternity, Adoption, Paternity, Parental, Shared Parental and Parental Bereavement Leave



## Compassionate Leave

Up to 10 days paid leave following the death of a close relative



## Cadet and Reserve Armed Forces Leave

Up to 10 days paid leave per year to take part in duties or training.



## Public Duty Leave

Additional leave for members of certain public bodies to undertake duties



workplace  
wellbeing  
CHARTER

**DARTFORD**  
BOROUGH COUNCIL

# Job Profile

**Job Title:** Landlord Relationship Officer

**Grade:** F

**Reporting to:** Senior Housing Solutions Private Sector Officer

**Responsible for:** N/A

## Experience:

Experience of working with private landlords, letting agents, working in the homelessness field

## Specialist Knowledge:

A sound knowledge of The Housing Act 1996, an understanding of The Housing Act 2004 and The Renters Rights Act 2025

## Qualifications:

5 GCSE's grade C or above or equivalent

## Special Circumstances:

- Must have full driving licence and use of own transport.
- Flexible approach to attending external meetings.

## Key activities:

- Manage the new starter process including offering positions, writing contracts, sending out offers and ensuring all new starter documents are returned and that all necessary employment checks are undertaken.
- Provide accurate and timely employee contractual information throughout the employee lifecycle (e.g. change of circumstances letters, revised contracts) as required to ensure employees have clarity over their role and terms and conditions.
- Ensure that all changes to payroll (e.g. new employees/leavers, changes to current employees pay and conditions) are made on the HR and Payroll System (iTrent), are communicated to Payroll and documented in line with agreed payroll deadlines.
- Ensure that the HR and Payroll system (iTrent) is continually and accurately updated with all employee changes/cost centres/department codes.
- Provide relevant management information when required and to assist with the preparation of statistical and other reports.
- Maintain accurate employee personal records for all employees, ensuring compliance with GDPR.
- Assist with the day to day operations of the HR Service and provide administrative support to the HR Manager, Senior HR Officer and HR Support Officer as required.
- Support the HR Manager and Senior HR Officer in HR projects and initiatives such as implementing new systems, processes or policies and improving ways of working when required.
- Undertake other duties commensurate with the grade of the post.



This, together with the competency levels is a description of the job as it is at present constituted. It is the practice of this Council to periodically review and update them to ensure that they relate to the job as then being performed, or to incorporate whatever changes are being proposed. You will be expected to participate fully in any discussions and, in connection with them, to re-write your job profile to bring it up-to-date if this is considered necessary or desirable, and to discuss it with your immediate superior. It is the Council's aim to reach agreement on reasonable changes, but if agreement is not possible the Council reserves the right to insist on changes to your job description after consultation with you. As a term of your employment you can be required to undertake such other duties commensurate with your grade, and/or hours of work, as may reasonably be required of you. All aspects of the post are to be carried out in compliance with the Council's overall Policies and Procedures, and all post holders will frequently have access to confidential information and will maintain such confidentiality as required by the Council.



workplace  
wellbeing  
CHARTER

**DARTFORD**  
BOROUGH COUNCIL